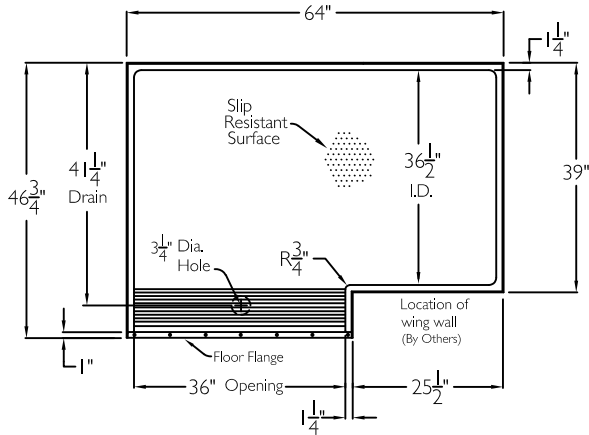
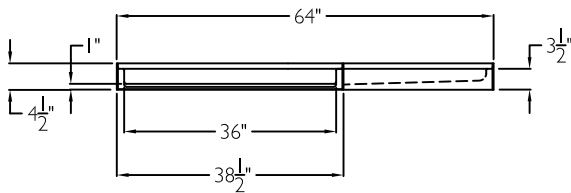


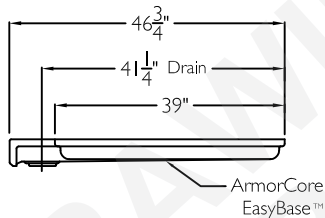
TOP VIEW



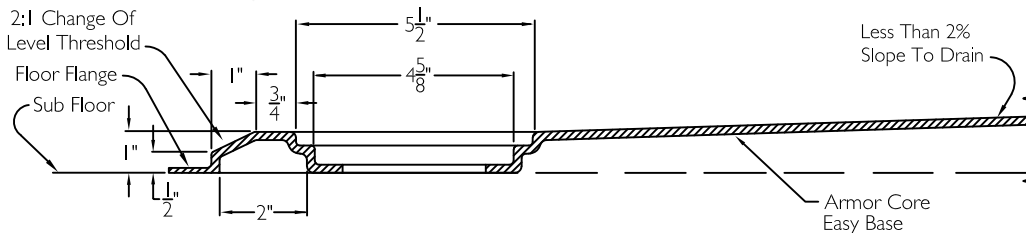
FRONT VIEW



SIDE VIEW



CROSS SECTION OF SHOWER BASE



SPECIFICATION SHEET

This shower pan shall be Asura model XSB 6447 TR COL I.0 Pan right. Finished surface shall be of a sanitary grade AcrylX™ applied acrylic. Unit construction shall be of a molded reinforced fiberglass with a 15% minimum fiberglass content.

The unit shall have outside dimensions of 64" wide x 46 3/4" deep at the entry side, 39" wide on the opposite side, and 4 1/2" High with a 1.0" Change of Level threshold.

The unit shall meet ANSIZ124.1.2, UPC and CSA-B45.5. The unit will comply with ADA and ICC/ANSI A117.1 provided wall above are configured with code required fittings.

HANDED BY THE WING WALL

The enclosure shall be equipped with the following accessories:

- 1) Integral front trench drain molded into unit,
- 2) Integral perimeter flange along the top,
- 3) L-shaped design for accessible roll in shower configuration,
- 4) Molded off-set to the right for future wing wall (by others),
- 5) Left hand drain/entry,
- 6) AcrylX™ surface finish,
- 7) Stainless steel trench grate,
- 8) Molded floor flange at the entry,
- 9) Armor Core Easy Base,
- 10) 1.0" change of level threshold.

WALLS ABOVE SHOWER PAN PROVIDED BY OTHERS.

|  |                        |      |   |                     |
|--|------------------------|------|---|---------------------|
| Job Name   | Approved By Print Name | Date | COMFORT DESIGNS   |                     |
| Project No   | Approved By Signature  |      | Model No. XSB 6447 TR I.0 COL-L ADA Alternate Shower Pan Right                          |                     |
| Comfort Designs<br>435 Industrial Road<br>Savannah, TN 38372<br>tel 800.443.7269<br>fax 731.925.4290<br>www.comfortdesignsbathware.com | Architect              |      | Drawing No. XSB 6447 TR I.0 COL-L ADA Alternate Shower Pan Right                        |                     |
|  | Engineer               |      | Date Issued, 12-19-19   | Drawing Rev, 7-8-21 |
|  | Rep                    |      | Material, AcrylX™ Applied Acrylic Surface   |                     |
|  | Wholesaler             |      | Color:  |                     |
|  | Comments               |      | Dimensions are in inches. Due to the nature of the materials dimensions may vary ± 1/2" |                     |